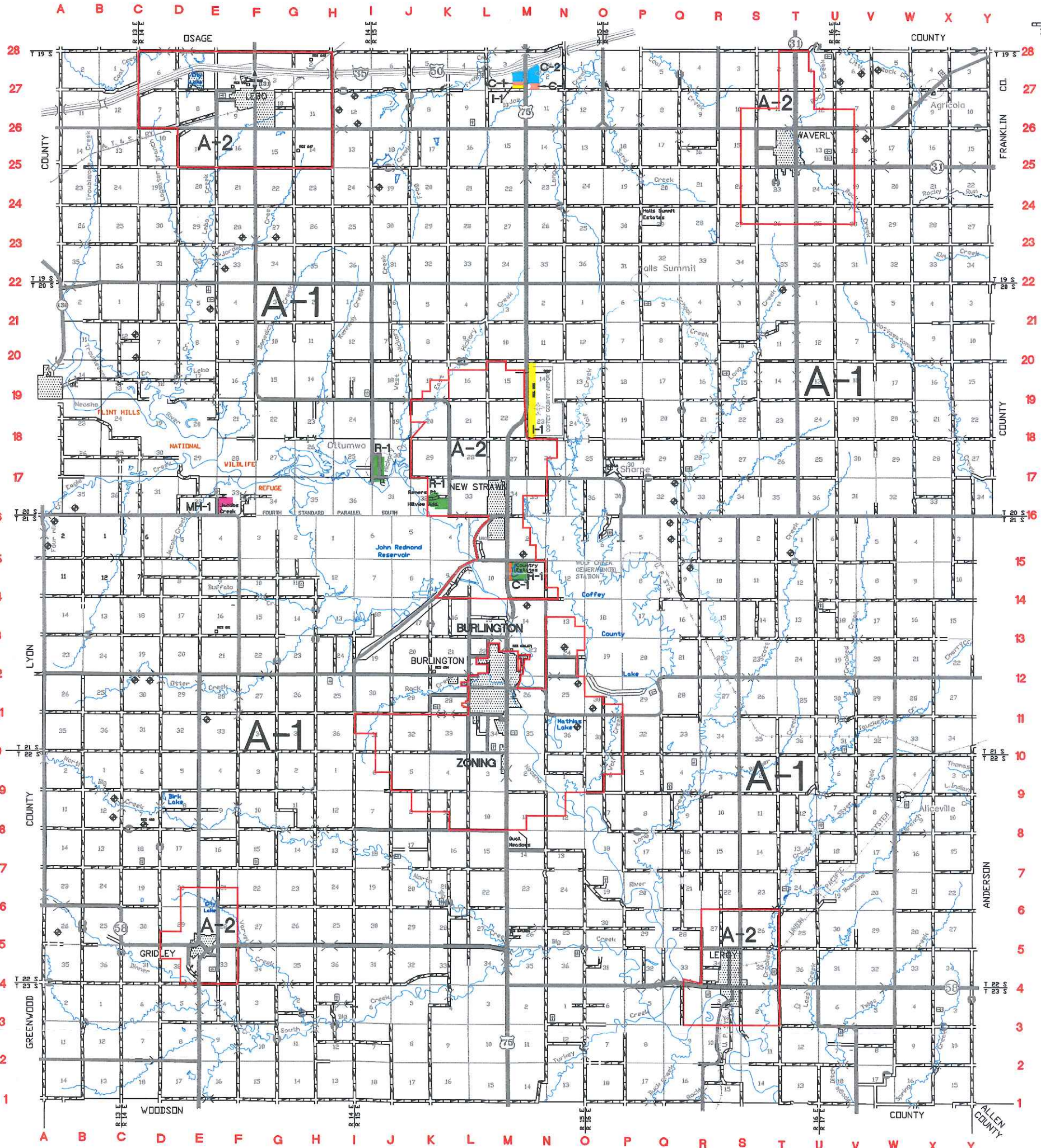


# COFFEY COUNTY, KANSAS

## OFFICIAL ZONING MAP



### ZONING DISTRICTS

- A-1 AGRICULTURAL
- A-2 AGRICULTURAL TRANSITION
- R-1 SINGLE-FAMILY SUBURBAN RESIDENTIAL
- MH-1 MANUFACTURED/MOBILE HOME SUBDIVISION
- C-1 SERVICE COMMERCIAL
- C-2 INTERCHANGE COMMERCIAL
- I-1 INDUSTRIAL

### LEGEND

- ☐ CEMETARY
- ◆ ROCK QUARRY
- ▭ CITY LIMITS
- SURFACE ROAD
- ROCK ROAD
- DIRT ROAD

OFFICIAL COPY OF ZONING DISTRICT MAP INCORPORATED INTO ZONING REGULATIONS BY ADOPTION OF RESOLUTION NO. 2011-01 BY THE GOVERNING BODY OF COFFEY COUNTY, KANSAS ON THE 15th DAY OF July, 2011. EFFECTIVE DATE: July 15, 2011.

GIN DALE, CHAIRMAN

ANGIE KIRCHNER, COUNTY CLERK

REVISION DATES:

